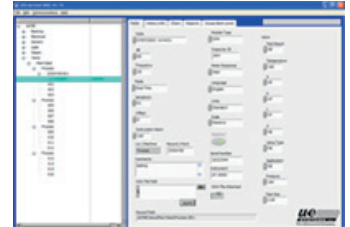


Digital Ultrasonic inspection system



Select any of 6 applications: Generic, Leak Valves, Bearings, Electrical or Steam and the Ultraprobe 10,000 automatically sets relevant fields for your data logging convenience. All stored data is easily downloaded to the Ultratrend DMS software.



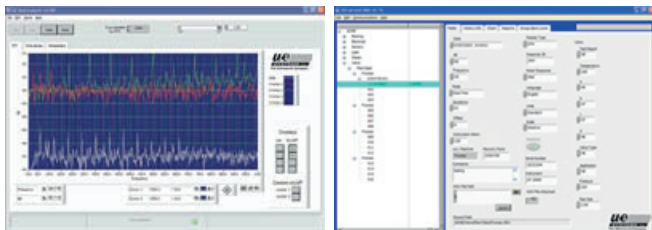
Expand your inspections.

In addition to on-board data logging, the Ultraprobe 10,000 accepts and stores data from external devices such as thermometers and tachometers.



One of the worlds' most advanced digital ultrasonic detection systems

Inspect – Record Sounds – Store Information – Manage Data
The Ultraprobe® 10,000 brings Ultrasound Inspection technology to a whole new level. With this one system, inspectors can perform condition analysis, record sounds, store and manage data.



The Ultraprobe 10,000 Has On-board Sound Recording
With the push of a button, record a sound sample directly into the instrument and link it to one of 400 record files stored in the Ultraprobe.

With The Ultraprobe 10,000 System, Test The Way You Want

- Specialized Application Screens
- Adjustable On/Off Features
- Connect to External Devices
- Flexible Reporting Options

Utilizing just two controls: User friendly Spin and Click Technology of the Ultraprobe 10,000 simplifies sound recording, data collection, system customization and data entry.

ULTRAPROBE® 10,000 is a Complete Ultrasonic Asset Management System

Something for Everybody: Whatever you're going to test, the Ultraprobe 10,000 has application-specific software for you. With the "click" of a button you can select an Application with Specialized fields for accurate reporting and analysis

What Do You Want to Test Today?

Practically everything you'll need for specialized inspection is included with the Ultraprobe 10,000 Inspection System; LRM with laser sight and more!

LONG RANGE MODULE: will double the detection distance of the standard Trisonic Scanning Module and enhance performance for any electrical or leak inspection job. With a 10° field of view, you can pinpoint the exact location of a problem at a safe distance; no need to climb ladders or use a lift.



RAS-MT REMOTE ACCESS SENSOR MAGNETIC MOUNT TRANSDUCER:

comes with cable, which allows users to inspect hard-to-reach test points. In addition, it provides for consistency of results by eliminating variables such as angle of approach and contact probe pressure.



Digital Ultrasonic inspection system

Technical Specifications

- Construction: Hand-held pistol type made with coated aluminum and ABS plastic
- Circuitry: Solid State Analog and SMD Digital Circuitry with temperature compensation and true RMS conversion
- Frequency Range: 20 kHz to 100 kHz (tunable in 1 kHz increments)
- Response Time: Display: 128 x 64 LCD with LED Backlight
Memory: 400 storage locations
- Battery: Lithium Ion Rechargeable
- Operating Temperature: 32° Fahrenheit to 122° Fahrenheit (0° Celcius to 50° Celcius)
- Output(s): Calibrated heterodyned output
- Probes: Trisonic Scanning Module, Stethoscope Module & Long Range Module
- Headset: Deluxe noise attenuating headphones – Hard Hat Version
- Indicators: dB, Frequency, Battery Status, and 16 Segment Bar Graph
- Sensitivity: Detects .005" (.127 mm) diameter leak @ 5 psi (.34 bar) at a distance of 50 feet (15.24m)
- Threshold: 1 x 10⁻² std. cc/sec to 1 x 10⁻³ std. cc/sec
- Dimensions: Complete kit in Zero Halliburton aluminum carrying case 21.5" x 18.5" x 8" (55 x 47 x 20 cm)
- Weight: Pistol Unit: 2.35 lbs. (1.1 kg) Complete carrying case: 19 lbs. (8.6 kg)
- Warranty: 1 year parts/labor standard, 5 years with returned completed warranty registration
- Display Modes: Real Time, Snap Shot, Peak Hold, Storage Display, Application specific
- Covered by one or more of the following patents: 051115, 0303776, 0315199, 1206586, 1297576, 1881263, 2562758, 2689339, 4416145, 4823600, 5955670, 6122966, 6339961, 6341518, 6415645 and others pending.

UE Systems is committed to continual product improvement therefore specifications are subject to change without notice. Warranty details are available by request.

Ultraprobe® 10,000 Complete Detection Kit

The Ultraprobe 10,000 Kit comes loaded with all the accessories you'll need for effective condition monitoring.

- Ultraprobe housing with on-board sound recording, on-board data logging
- "Spin & Click" technology for function controls
- SD Card and SD Card Reader
- Patented UE Trisonic Scanning Module
- Stethoscope (Contact) Module
- Hard hat style acoustic isolating headphones
- Long Range Module with laser sight
- RAS-MT Remote Access Sensor with Magnetic Mount Transducer
- Ultratrend DMS Data Management Software*
- UE Spectralyzer Spectral Analysis Software*
- Battery recharger
- Zero-Halliburton Carrying Case
- Warble Tone Generator
- Rubber Focusing Probe for Narrowing Reception Field & for Shielding Competing Ultrasound
- RAM Adaptor enabling the UP-10,000 to read RAS sensors
- Holster Set
- Spare battery
- UE-POD Charging Station
- Digital LCD display and LED Backlight



Digital Ultrasonic inspection system

Accessories:

DHC-2BT: BLUETOOTH HEADPHONES

Deluxe noise attenuating headphones – for hard hat use.
The DHC-2BT-TR Bluetooth transmitter must be ordered to pair with the headphones



UE-RAM

Adaptor Enabling Ultraprobe 10,000 To Read RAS Sensor



UE-RAS Permanent Mounted Sensor

With 25' Cable Readable by the Ultraprobe 10,000 (requires RAM)



UP-201: UP-201: ULTRASONIC GREASE CADDY

Prevents over lubrication. Provides visual and audible indication for proper lubrication.

HTS-10: HOLSTER SET

One for the Ultraprobe pistol, module and headphones, the other for accessories. Keeps hands free for walking routes and climbing up and down ladders.



Digital Ultrasonic inspection system

Accessories:

TFSM-9/10: TELESCOPING & FLEXIBLE SCANNING MODULE

Extend and Bend this probe to odd angles to locate sound sources in hard to reach areas.
(up to 84 in / 2.1 m)



FSM-9/10: FLEXIBLE SCANNING MODULE

Bend this probe to odd angles to locate sound sources in hard to reach areas.

UWC-9/10: ULTRASONIC WAVE FORM CONCENTRATOR (PARABOLIC DISH)

The UWC doubles the detection range of standard scanning modules and pinpoints ultrasonic leaks & electric emissions at great distances.



CFM-9/10: CLOSE FOCUS MODULE

A specialized module to help locate LOW LEVEL pressure and vacuum leaks.

EXC-9/10: MODULE INTERCONNECTION CABLE

Shielded cable, works with either module for hard to reach areas. Standard length: 8' (2.4M).
Lengths up to 50 ft. are available.

