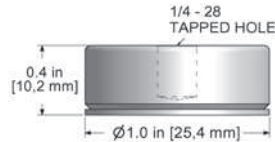


Mounting Pads/Magnet Targets

Section 4 - Mounting Hardware

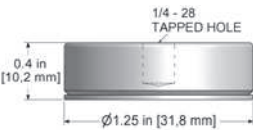
MH130-1A



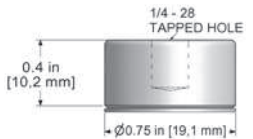
For Portable Route Measurements or Permanent Mount

- Makes an excellent target for magnet mounted sensors
- Accurate high frequency response, up to 600,000 CPM (10000 Hz) when used with CTC magnetic bases for flat surfaces
- Protective cap cover supplied - keeps unwanted paint and debris off of the target
- Ensures consistent measurement locations for accurate trending
- Simplifies the job of permanently mounting sensors
- Adhesively mount pad into place and simply stud mount the accelerometer onto a pre-tapped hole in the pad

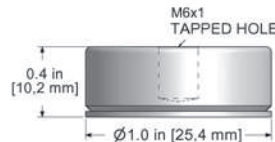
MH130-3A



MH130-4A



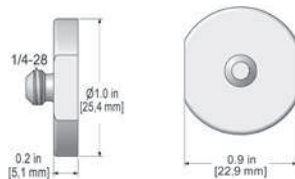
MH130-6A



Features

- 17-4 Stainless Steel
- Will attract to magnetic bases
- Mounting surface (flatness) of .0005
- Abraded adhesive mounting surface for superior bonding of adhesive to the pad
- 1/4 - 28 Mounting Hole

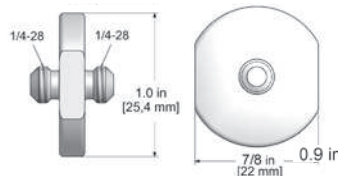
MH101-1B



For Permanent Mount

- Simplifies installation of sensors
- 316L Stainless Steel
- Integral 1/4-28 stud for permanent mount using adhesive

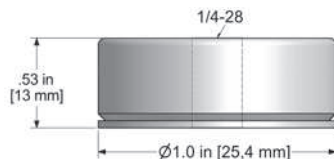
MH138-1A



For Permanent Mount

- Simplifies installation of sensors
- 316L Stainless Steel
- 1/4 - 28 Integral Mounting Studs

MH130-1B

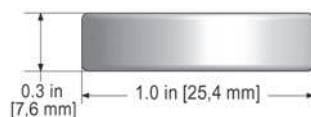


For Permanent Mount

- Allows for the use of two separate mounting studs
- One stud to mount the pad to the machine and the other stud to mount the sensor to the pad

MH133-1A

Magnet Target



For Portable Route Measurements

- Ideal for walk-around routes, designed for repeatable data collection
- Laser etched for easy ID of "Vibration Test Point"

Features

- Low Cost Magnetic Stainless Steel Target
- Abraded adhesive mounting surface for superior bonding of adhesive to the pad

Backed by our Unconditional Lifetime Warranty

www.ctconline.com

